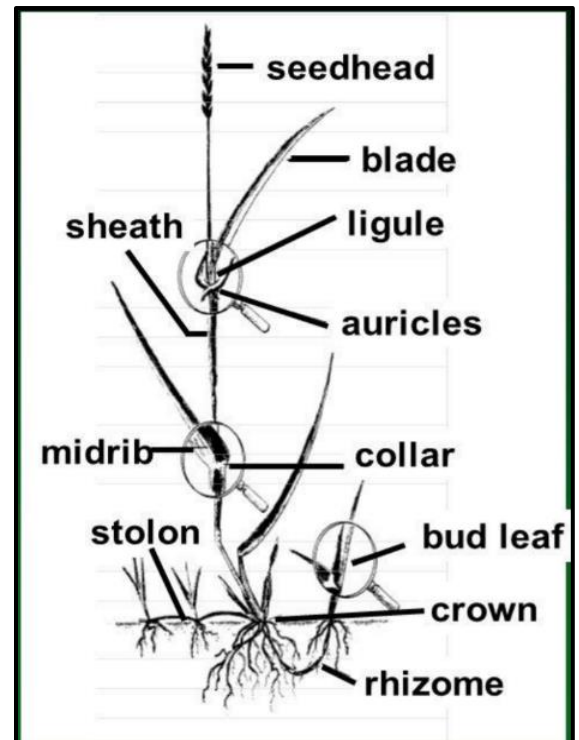


## GRASSY WEEDS

<b>TITLE:</b>	<b>NIMBLEWILL</b>
<b>LATIN NAME:</b>	<i>Muhlenbergia schreberi</i>
<b>FAMILY:</b>	Poaceae
<b>OVERALL DESCRIPTION:</b>	
Thin flat leaves with four veins on the upper surface that are normally less than two inches long. Spreading growth pattern that starts growing upright, but later lies flat near the base and become upright farther up the stem. May be confused with creeping bentgrass ( <i>Agrostis stolonifera</i> ) or Bermuda grass ( <i>Cynodon dactylon</i> ). Creeping bentgrass is finer in texture with narrow green leaves, a large pointed ligule and no hairs around the ligule. Bermuda grass differs in that it has fringed ligule.	
<b>LIFE CYCLE</b>	Perennial, warm season grass
<b>SEASONS OF GROWTH</b>	Requires warm weather to green up. Flowers from August to October. Turns brown with first frost and goes dormant.
<b>LEAF SHEATHS</b>	Thin, flat, and short with four veins on the upper surface
<b>FLOWERS / SEEDHEAD</b>	Nondescript flowers on fine, slender flower heads that bloom from August to October. Seeds are chestnut-brown, spindle-shaped, and 1/20 inch long.
<b>LEAF BLADES</b>	Narrow, pointed and thin grayish- to bluish-green leaf blades that are less than 2 inches long
<b>LEAF VERNATION</b>	Rolled
<b>LIGULE</b>	Very short; contains only a few hairs
<b>AURICLE</b>	None
<b>ROOTS</b>	Fibrous and fine
<b>ANY OTHER DISTINGUISHING TRAITS</b>	Because Nimblewill is only green during warm weather, patches can appear to be dead spots in the lawn.



TYPICAL GRASSY WEED

<b>TYPE OF SOIL CONDITIONS OR PRACTICES FAVORING GROWTH</b>	Thrives in shade in infertile soil, but easily tolerates sunnier areas. Spreads by both seeds and spreading stems so allowing the plant to go to seed encourages growth, as does failure to maintain healthy lawn which allows Nimblewill to spread.
<b>KEY MESSAGE TO HOMEOWNER</b>	Maintaining a healthy lawn can help limit the growth and spread of Nimblewill.
<b>CULTURAL CONTROL</b>	Maintain a healthy, dense turf that can limit the ability of Nimblewill to grow and spread.
<b>MECHANICAL CONTROL</b>	Can be dug out; however, it is important to get all the roots; otherwise, the plant will regrow from any remaining pieces. Be certain to trash anything pulled rather than leaving in the grass or composting.
<b>CHEMICAL CONTROL</b>	Spot treat Nimblewill with a nonselective herbicide containing glyphosate. (VCE 2020 Pest Management Guide, p.5-28)

<b>SOURCES OF INFORMATION</b>	<p>University of Maryland Extension  <a href="https://extension.umd.edu/hgic/topics/nimblewill">https://extension.umd.edu/hgic/topics/nimblewill</a></p> <p>Missouri Botanical Garden  <a href="https://www.missouribotanicalgarden.org/gardens-gardening/your-garden/help-for-the-home-gardener/advice-tips-resources/pests-and-problems/weeds/nimblewill.aspx">https://www.missouribotanicalgarden.org/gardens-gardening/your-garden/help-for-the-home-gardener/advice-tips-resources/pests-and-problems/weeds/nimblewill.aspx</a></p> <p>The Ohio State College of Food, Agriculture and Environmental Science  VCE Pest Management Guide  <a href="https://www.oardc.ohio-state.edu/weedguide/single_weed.php?id=83">https://www.oardc.ohio-state.edu/weedguide/single_weed.php?id=83</a></p> <p>VCE Pest Management Guide  <a href="https://www.pubs.ext.vt.edu/content/dam/pubs_ext_vt_edu/456/456-018/ENTO-336.pdf">https://www.pubs.ext.vt.edu/content/dam/pubs_ext_vt_edu/456/456-018/ENTO-336.pdf</a></p>
<b>FCMGA SPECIAL PROJECT RESEARCH BY</b>	Susan McCrackin, FCMGA Intern
<b>REVIEWED BY</b>	Tony Makara, FCMGA